

# Our



# in Minamata

# What is SDGs?

The world today is facing various issues such as intensifying climate change, ongoing conflicts, and the ever-widening gap between the rich and the poor. Concerned that "we cannot pass down this beautiful Earth to the next generation as it is," the member countries of the United Nations gathered to create common global goals to solve these issues. These are the SDGs (Sustainable Development Goals).

SDGs is an abbreviation of "Sustainable Development Goals" in English, translated as "Sustainable Development Goals" in Japanese. Simply put, it means "goals to sustain the world."

## SUSTAINABLE DEVELOPMENT GOALS



The SDGs consist of 17 goals.

At first glance, these goals may seem independent of each other, but in reality, they are related and influence each other.

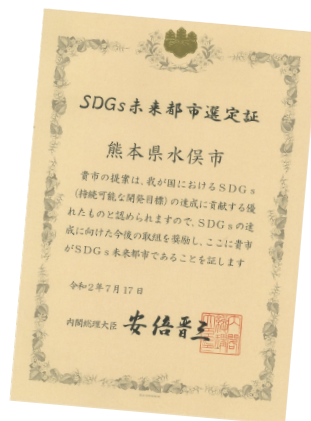
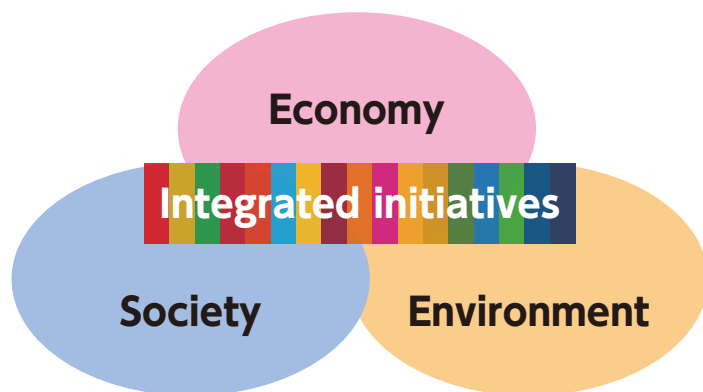
Now, as humans living on the same planet, people around the world are cooperating to solve problems, transcending the boundaries between developed and developing countries.

To those who have picked up this book, why not join us in working towards the SDGs?

# Minamata City is an SDGs Future City.

An SDGs Future City is one that the government selects from among cities promoting basic and comprehensive initiatives aligned with the philosophy of the SDGs, especially those with high potential to achieve sustainable development through the creation of new value in the three dimensions of "economy," "society," and "environment." Minamata City was selected in July 2020.

As of February 2025, 207 municipalities nationwide have been selected, and within the prefecture, in addition to Minamata City, Oguni Town, Kumamoto City, Kikuchi City, Yamato Town, Yatsushiro City, Kami-Amakusa City, and Minami-Aso Village have also been selected.



## About This Book

Minamata City has engaged in various activities over the years, all of which are connected to the current SDGs. In this book, we introduce these activities according to each of the 17 goals.



## Table of Contents

	No Poverty · · · · ·	4
	Zero Hunger · · · · ·	5
	Good Health and Well-Being · · · · ·	6
	Quality Education · · · · ·	7
	Gender Equality · · · · ·	8
	Clean Water and Sanitation · · · · ·	9
	Affordable and Clean Energy · · · · ·	10
	Decent Work and Economic Growth · · · · ·	11
	Industry, Innovation and Infrastructure · · · · ·	12
	Reduced Inequalities · · · · ·	13
	Sustainable Cities and Communities · · · · ·	14
	Responsible Consumption and Production · · · · ·	15
	Climate Action · · · · ·	16
	Life Below Water · · · · ·	17
	Life On Land · · · · ·	18
	Peace, Justice and Strong Institutions · · · · ·	19
	Partnerships for the Goals · · · · ·	20
	Efforts of Minamata High School · · · · ·	21
	Original Logo Mark of Minamata, the Future City of SDGs · · · · ·	23
	Registered Business Operators of Kumamoto Prefecture for SDGs · · · · ·	24
	SDGs Actions You Can Start Today · · · · ·	25
	The Vision Minamata Aims For · · · · ·	26





# No Poverty

End poverty in all its forms everywhere.

## Turn Wastefulness into Someone's Gratitude.

### ~Minamata Support Network for the Needy~

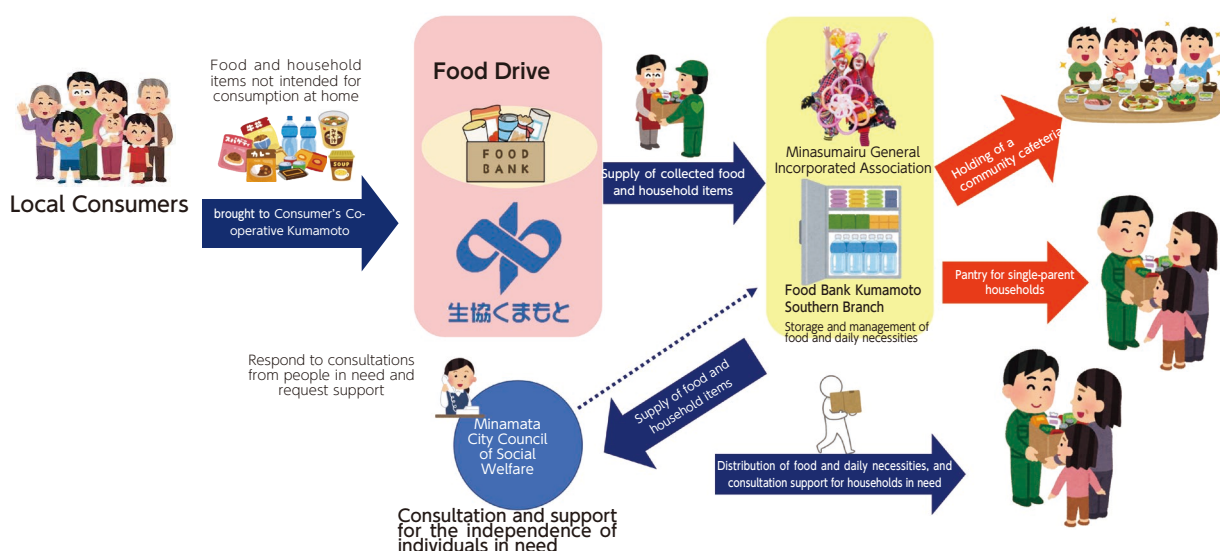
Minamata City Council of Social Welfare / Consumer's Co-operative Kumamoto  
/ Minasumairu General Incorporated Association

The Minamata City Council of Social Welfare, Consumer's Co-operative Kumamoto, and Minasumairu General Incorporated Association have formed an agreement among the three organizations and are undertaking initiatives to support people in need.

The Consumer's Co-operative Kumamoto collects food and daily necessities from citizens through food drives, Minasumairu properly stores these items, and the Social Welfare Council connects people in need who come for consultations with the stored food and daily necessities.

Through this initiative, surplus food and daily necessities can be delivered to those in need instead of being discarded.

The food drive is held on the third Friday, Saturday, and Sunday of every month at the Suikosha Main Store of the Consumer's Co-operative Kumamoto. If you have surplus food or unwanted daily necessities at home, please consider donating them.



Minamata City Council of Social Welfare Address: 3-1 Makinouchi, Minamata City ☎ 63-2047

#### Keyword

#### Food Drive

A food drive is an activity where surplus, uneaten food from households is collected and provided to people or organizations in need, through welfare agencies. It also helps in reducing food waste at home.



# Zero Hunger

End hunger, achieve food security and improved nutrition and promote sustainable agriculture.

## Connecting Safe and Secure Food to the Future. ～ Japan Agricultural Cooperatives Ashikita ～

All 62 members of the Japan Agricultural Cooperatives Ashikita Saratamachan Club have received the "Midori Certification" from the prefectural governor.

The club has established strict management standards that limit the use of pesticides and chemical fertilizers to less than half of the conventional levels in the prefecture when producing Saratamachan.

To meet these standards, measures such as solar heat sterilization of seedbeds and soil preparation using green manure (plants like sunflowers used as fertilizer) are employed. Additionally, compost from local livestock farmers is utilized in soil preparation.

Despite the significant effort required, the reason for producing under such stringent management standards comes from the strong desire of the club members for consumers to eat with peace of mind.



Japan Agricultural Cooperatives Ashikita Minamata Core branch  
Address: 2-9-23 Hamamachi, Minamata City ☎ 63-2148

### Keyword

### Midori Certification

It is a system where the prefecture certifies plans created by farmers who engage in one of the following business activities:

- ① Business activities that integrally involve soil improvement and reduction of the use of chemical fertilizers and chemical pesticides.
- ② Business activities that contribute to the reduction of greenhouse gas emissions.
- ③ Other business activities as specified separately by the Minister of Agriculture, Forestry and Fisheries.



# Good Health And Well-Being

Ensure healthy lives and promote well-being for all at all ages.

## Health Is the Foundation of Happiness.

～ The Minamata City Lively Health Division ～



The scene of the Health Festival

The Minamata City Lively Health Division was established as a citizen-participatory organization to promote citizens' health (extending healthy life expectancy, improving quality of life).

The council plans and manages the Health Festival based on the 'Vibrant Minamata Health Plan' and engages in activities to improve citizens' health.

Minamata City Health Promotion Council Secretariat:  
Minamata City Lively Health Division ☎ 63-3202

## Health and Interaction through Sports Tournaments.

～ Citizens and Minamata City ～

Summer tradition of Minamata - the Boat Auction tournaments. Winter tradition - the Citizen's Ekiden Relay Race.

These tournaments serve as an opportunity for people who regularly practice to test their skills, but they also motivate many to practice specifically for these events, helping to alleviate the lack of physical activity among citizens.

Both tournaments feature intense matches every time, with many teams participating from local communities and workplaces.

Through practice and competition, interactions within teams and with rival teams are also strengthened.

Why not join the next tournaments.



Minamata City Sports Promotion Division ☎ 83-9700





# Quality Education

Ensure inclusive and equitable quality education and promote lifelong learning opportunities for all.

## "Knowledge" Collaboration Hub ～ Minamata Environmental Academia ～



The Minamata Environmental Academia is a facility established by the city of Minamata in 2016 with the aim of connecting "the knowledge of Minamata" with "knowledge from inside and outside Japan," creating new knowledge through collaboration between industry, academia, government, and citizens, and disseminating solutions to various global challenges.

In collaboration with domestic and international universities and research institutions, we aim to promote understanding of the SDGs and develop individuals with an SDGs mindset. To this end, we conduct SDGs Future City Festivals and public lectures throughout the year. Additionally, we host study tours from both domestic and international visitors and seek to attract international conferences, sharing the experiences of Minamata and the technologies of local environmental companies.

Additionally, through its programming talent development projects, the Academia supports information education in elementary and junior high schools in the city and collaborates with Minamata High School in programming activities, providing a continuous space for information education and contributing to the development of human resources aimed at achieving the SDGs.



Minamata Environmental Academia Address: 6-1 Nanpukuji, Minamata City ☎ 84-9711



# Gender Equality

Achieve gender equality and empower all women and girls.

## Men's Cooking Class "Challenge Cooking" ～ Minamata City Food Lifestyle Improvement Promoter Council ～

For men who don't usually cook, preparing meals for their families can be a significant challenge not only technically—due to a lack of knowledge and skills—but also psychologically, with concerns such as "What if I can't make it?" or "What if it's not tasty?"

Therefore, the Minamata City Food Lifestyle Improvement Promoter Council conducts the "Challenge Cooking" program with the aim of encouraging participation in cooking by men who have never cooked before or who are not good at cooking.

In 2021, a cooking class was held in collaboration with the Cabinet Office's "Let's Start Otohan Campaign."



Participants shared feedback such as, "I realized how hard it is to cook every day," and "I'm grateful to my partner." It would be wonderful if they could continue cooking at home by learning how to make simple, hassle-free, and delicious meals!

Minamata City Food Lifestyle Improvement Promoter Council Secretariat: Minamata City Lively Health Section ☎ 63-3202

### Keyword

## Gender

Apart from the physical differences between men and women, there are also unconscious assumptions about gender roles, such as "men should be like this" and "women should be like that," which are referred to as "gender."

For example, assigning specific colors to boys and girls, or assuming that men work and women handle chores.

These unconscious biases create gender inequality.





# Clean Water and Sanitation

Ensure availability and sustainable management of water and sanitation for all.

## Protect Our Rivers and Seas from Pollution

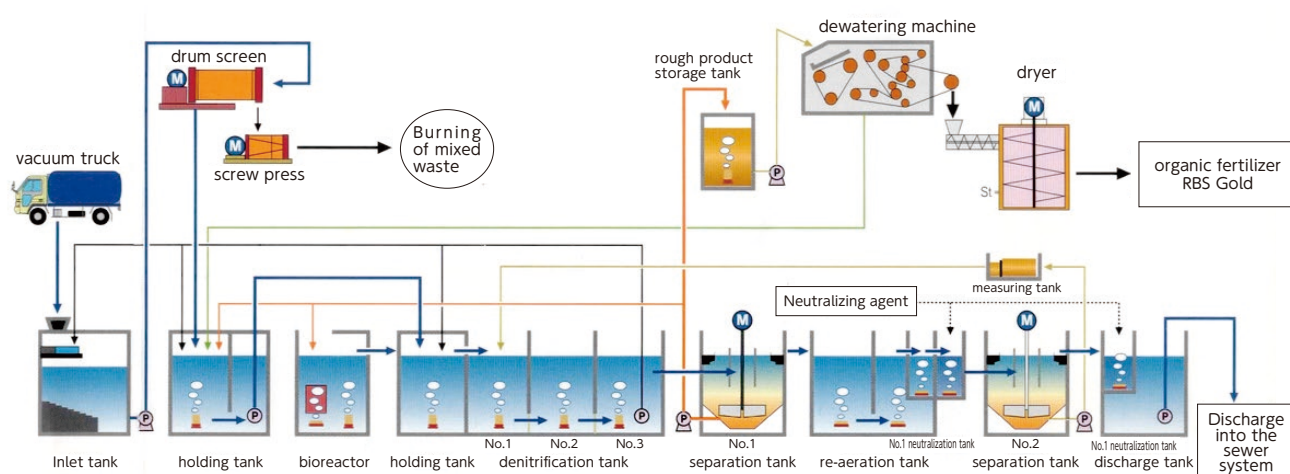
～ RBS Co., Ltd ～



RBS Co., Ltd., established in 2001, is the first company in Japan to use private capital for public projects, operating as a combined night soil treatment plant and organic fertilizer manufacturing and sales company.

It handles the treatment of septic tank sludge and night soil collected from Minamata City, Ashikita Town, and Tsunagi Town.

\* This includes sludge accumulated in septic tanks not connected to public sewage systems and night soil from vault toilets.



Here, microorganisms from soil microbial communities decompose and purify the night soil and other waste in the wastewater, converting it into clean treated water.

Additionally, the microorganisms generated during the treatment process are dehydrated and steam-dried to be sold as fertilizers and soil improvement agents. This fertilizer (RBSGold) is well-received by local farmers and home gardeners and is used for Minamata's famous dekopon and salad onions.



RBS Co., Ltd. Address: 54-190 Tsukinoura, Minamata City ☎ 68-2130



# Affordable and Clean Energy

Ensure access to affordable, reliable, sustainable and modern energy for all.

## Harnessing The Blessings of the Samukawa Water Source into Energy.

～ Kugino Regional Promotion Association, Samukawa Suigentei Project Division ～

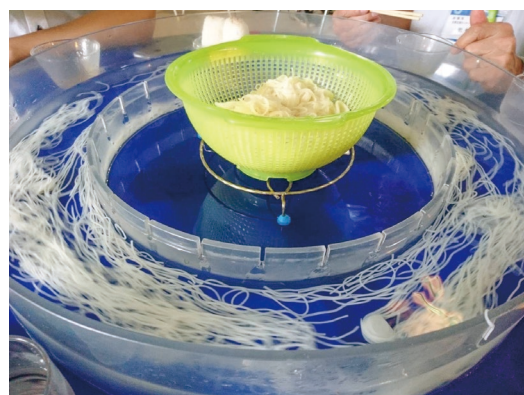


In the Kugino Samukawa area, there is the Samukawa water source where groundwater from Mt. Ozeki springs forth.

Near the Samukawa water source, there is a facility run by local residents called the Samukawa Suigentei, where they offer somen noodles using water from the source and salt-grilled Yamame trout.

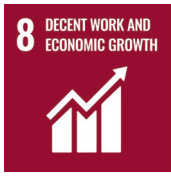
In the Samukawa area, amidst ongoing depopulation and aging, discussions on how to preserve the community and the Samukawa Suigentei for future generations led to the decision to focus on the significant burden of electricity costs. As one of the initiatives, they decided to implement a "small hydroelectric power generation project" that utilizes water from the Samukawa water source to generate electricity.

In carrying out the small hydroelectric power generation project, with considerable cooperation including flow rate surveys by local residents and the production of the waterwheel developed jointly by local company Taniguchi Iron Works Co., Ltd. and Kyushu University, the Samukawa District Hydroelectric Power Plant was completed in 2016. As a result, they were able to cover the electricity consumption of the Samukawa Suigentei, and the surplus electricity can be sold to generate revenue.



Minamata City Business Support Center ☎ 62-0639





# Decent Work and Economic Growth

Promote sustained, inclusive and sustainable economic growth, full and productive employment and decent work for all.

## Full Support for Local Businesses!

Minamata Chamber of Commerce / Minamata City Business Support Center



The Minamata Chamber of Commerce provides multifaceted support for the development of local businesses.

We offer business consultations (finance, taxation, labor, etc.), support for new business development, and regular free consultation sessions with experts.

Minamata Chamber of Commerce Address: 1-11-5 Ozonocho, Minamata City ☎ 63-2128

## Promoting the Charms of Minamata!

~ General Incorporated Association Minamata Tourism and Products Association ~

The Minamata Tourism and Local Products Association provides tourist information at the information center inside Shin-Minamata Station.

They also work to promote the city's proud attractions, such as Yunoko Onsen and Yunotsuru Onsen, and local products through events, while supporting local tourism businesses within the city.



General Incorporated Association Minamata Tourism and Products Association  
Address: 305-1 Hatsuno, Minamata City ☎ 63-2079





# Industry, Innovation and Infrastructure

Build resilient infrastructure, promote inclusive and sustainable industrialization and foster innovation.

## Industries Coexisting with the Earth

～ Minamata Eco-Town Council ～



The scene of the Industrial Park Festival.

The Minamata Eco-Town Council is an association primarily composed of companies engaged in environmental businesses located within the industrial park. Currently, it consists of 10 companies operating 11 business establishments.

The council supports the organization of the "Minamata Industrial Park Festival," welcomes study visits from both domestic and international visitors, and promotes its activities through these efforts.

Minamata Eco-Town Council Secretariat: Minamata City Business Support Center ☎ 62-0639

## Industries Coexisting with the Earth

～ AMI Co., Ltd. & Minamata City National Health Insurance General Medical Center ～

Medical institutions in Minamata City are concentrated in the urban areas, with almost none in the mountainous regions. As a result, residents in the mountainous areas must travel to the urban area to receive medical care, which is a burden for them.

Therefore, AMI Co., Ltd., a research and development startup aiming for rapid medical innovation, along with the city's general medical center and the city administration, are conducting a demonstration project to establish a telemedicine system aimed at addressing medical challenges in remote areas.

By using the "Remote Auscultation Video Chat System" developed by AMI Co., Ltd., which visualizes auscultation sounds and allows heart sounds to be verified both visually and aurally, a new form of telemedicine can be experienced.



Minamata City Business Support Center ☎ 62-0639



# Reduced Inequalities

Reduce inequality within and among countries.

## The First Step with Roses ～ NPO Global Horticultural Therapy Center ～



The Global Horticultural Therapy Center is a welfare workshop that supports the independence of people with disabilities by providing vocational training and employment opportunities through "horticultural therapy."

"Horticultural therapy" aims to restore mental and physical health through interaction with nature. By engaging with plants and soil using the five senses in a natural setting, individuals can reflect on themselves, discover new aspects of themselves, and find physical and mental healing. The center aims to provide opportunities for people with disabilities to take the first steps toward working if they wish to do so.

The Global Horticultural Therapy Center primarily manages the planting and maintenance of roses at the Eco-Park Minamata Rose Garden.

Usually, a large amount of pesticides is used in rose cultivation, but at the center, they strive to reduce pesticide use as much as possible and engage in environmentally friendly practices, such as processing picked rose flowers into fertilizer and using it to improve the soil.



NPO Global Horticultural Therapy Center

Address: 1-231-12 Shiomicho, Minamata City (Inside Eco-Park Minamata) ☎ 63-6499





# Sustainable Cities and Communities

Make cities and human settlements inclusive, safe, resilient and sustainable.

## Solving Local Issues

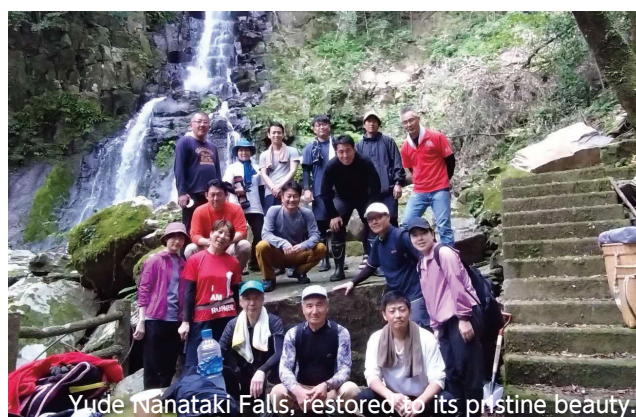
### ～ Training-based workation ～

The city is implementing "training-based workations." This is a type of "workation," where participants work while on vacation in a location different from their usual workplace or home. Participants stay in the city and learn about the city's SDGs initiatives, as well as experience solving local issues through various programs.

For example, the maintenance of Yude Nanataki, which was difficult to achieve with just the local residents, has restored its beautiful scenery and made the walking paths easier to navigate.



The scene of working at a facility in the city.



Yude Nanataki Falls, restored to its pristine beauty.

Matters related to training-based workation :

Minamata City Tourism Strategy Division ☎ 61-1629

## Creating a Community where Everyone can Live Together

### ～ "Local Japanese Language Class" Minamon Club ～

The city holds a class called "Local Japanese Language Class: Minamon Club" once a month for foreign residents living in the city, where they can learn essential Japanese language, culture, and customs for daily life.

In the class, participants talk with Japanese supporters about everyday issues, Japan and Minamata, as well as discuss disaster prevention and garbage disposal methods, and participate in recreational activities.



Matters related to the "Local Japanese Language Class: Minamon Club" :

Minamata City Regional Development Division ☎ 61-1606



# Responsible Consumption and Production

Ensure sustainable consumption and production patterns.

## Shopping that is Kind to People, Society, and the Environment ～ Consumer's Co-operative Kumamoto ～



At the Consumer's Co-operative Kumamoto, we actively promote ethical consumption.

For example, we use seafood that is MSC certified and label the product packaging accordingly. We also handle products from other companies that have the MSC label.

By using environmentally friendly products, we can achieve sustainable agriculture and fisheries, which also helps protect producers.

Additionally, we contribute to the community by conducting activities such as monitoring during product deliveries and operating a shopping support car.

The Kumamoto Consumer Cooperative Address: 1-1-1 Koga-cho, Minamata City ☎ 63-2121

**Keyword**  
**Ethical Consumption**

"Ethical" means "ethical and moral," and "ethical consumption" refers to choosing products that take into consideration people, society, and the environment.

## Waste if Discarded, Resource if Separated ～ Citizens of Minamata ～

The city pioneered the separation and collection of waste nationwide in 1993.

This initiative, where separation stations are set up in each district and conducted in cooperation with residents, is known as the "Minamata Method" and has spread throughout the country.

The now-commonplace practice of waste separation is an important initiative to turn waste into resources and sustain the world.



Environmental Clean Center Address: 9-40 Tsukiji, Minamata City ☎ 62-4101



# Climate Action

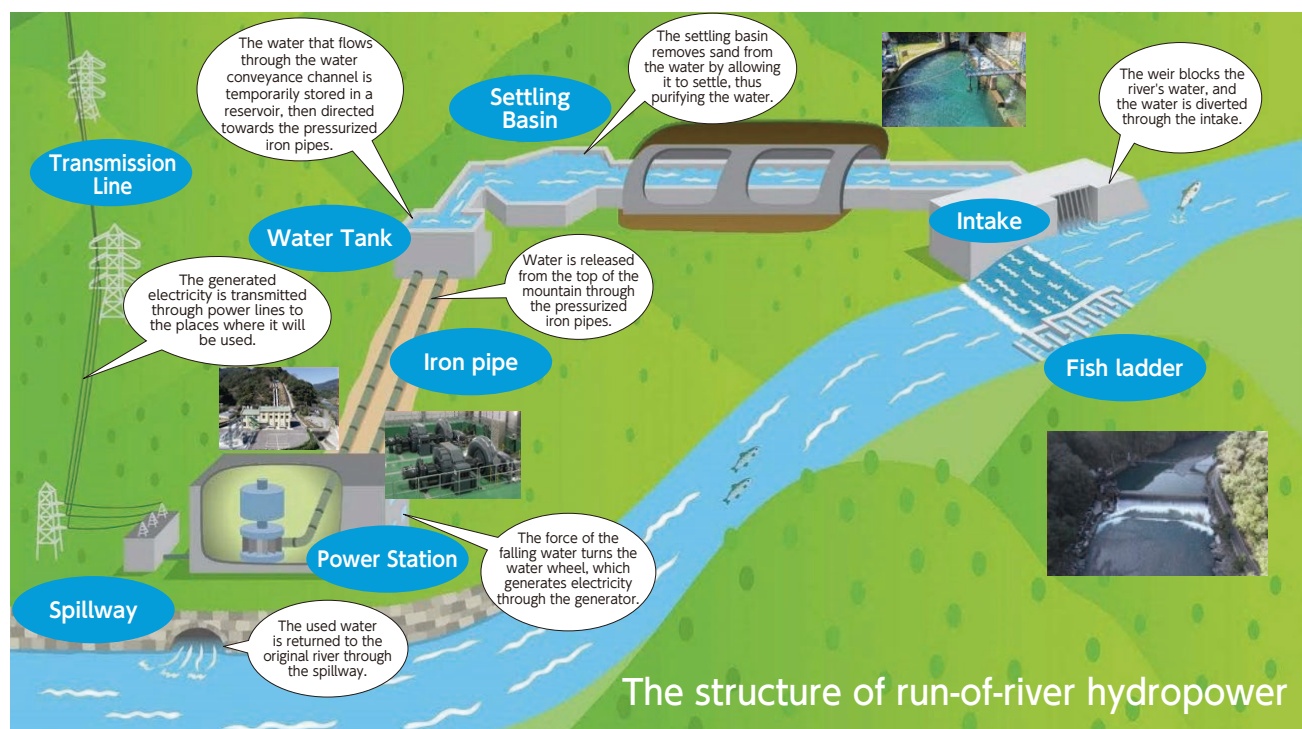
Take urgent action to combat climate change and its impacts.

## Earth-Friendly Energy ~ JNC Corporation ~

The JNC Group operates hydroelectric power stations at 13 locations: 11 in Kumamoto Prefecture, and one each in Miyazaki Prefecture and Kagoshima Prefecture.

The total maximum output is 97,990 kW (as of September 2024), with an annual generation capacity equivalent to approximately 140,000 households.

A portion of the electricity generated is transmitted via 161 km of in-house transmission lines and used at the Minamata manufacturing plant and associated facilities.



All of the JNC Group's hydroelectric power plants adopt the "run-of-the-river" method. This scheme diverts some water from the upstream portion of a river, removes debris and sand, and then uses the land's natural contours to drop the water through iron pipes to spin turbines and generate electricity. After power generation, the water is returned to the original river, making it a power generation method with minimal environmental impact.

Additionally, fish ladders are installed to facilitate fish migration, contributing to the preservation of the natural environment.

JNC Corporation Minamata Manufacturing Plant  
Address: 1-1 Noguchi-cho, Minamata City ☎ 63-2116



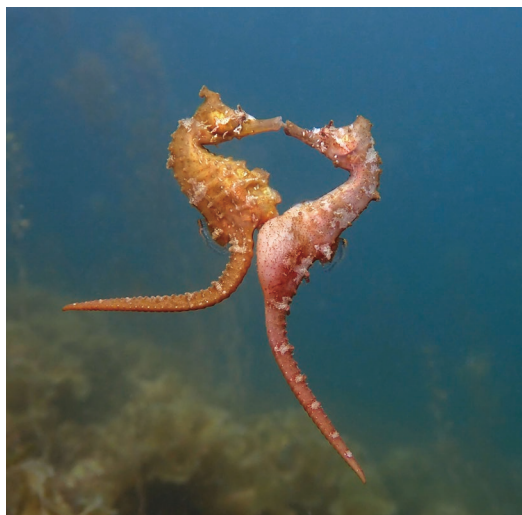


# Life Below Water

Conserve and sustainably use the oceans, seas and marine resources for sustainable development.

## Restore the Seaweed Forests

～ Minamata City Fisheries Cooperative & Minamata Diving Service SEA HORSE ～



Seaweed beds serve as spawning grounds for marine organisms and play a vital role in purifying seawater through photosynthesis.

In recent years, "Isoyake" (rocky shore barren) has become a problem due to the feeding damage caused by the increased "long-spined sea urchins" (*Diadema setosum*) as a result of rising sea temperatures due to global warming.

Minamata City Fisheries Cooperative and divers are working on removing the sea urchins to regenerate seaweed beds.

Additionally, to protect the "Himetatsu" (*Hippocampus coronatus*), which was designated as an "endangered species" in 2024 and is a symbol of the regeneration of Minamata's sea, the NPO "Omoide Tsukuru Minamata" declared the "Himetatsu Sanctuary" in July 2024, promoting efforts to preserve the rich sea of Minamata for future generations.

Minamata City Fisheries Cooperative Address: 2-8-1 Marushima-machi, Minamata City ☎ 63-3355  
Minamata Diving Service SEA HORSE Address: 11-11 Makinouchi, Minamata City ☎ 83-5678  
NPO "Omoide Tsukuru Minamata" Address: 1196-2 Osako, Minamata City ☎ 070-8323-3318

## Sea and River Cleanup Operation

～ Citizens of Minamata ～

In Minamata City, every summer we conduct a "Sea and River Cleanup Operation" together with the citizens, collecting trash around the Minamata River and coastline.

This important activity aims to prevent land waste from becoming marine waste and to reduce marine debris. Every year, many citizens participate in this effort.

Minamata City Environment Division ☎ 61-1613



### Keyword Marine Debris

The most common type of marine debris is single-use plastic waste. These break into small fragments called "microplastics" in the ocean, and they are found in the bodies of marine organisms worldwide.



# Life On Land

Protect, restore and promote sustainable use of terrestrial ecosystems, sustainably manage forests, combat desertification, and halt and reverse land degradation and halt biodiversity loss.

## Create a Mountain Ecosystem Cycle ～ Wood one LLC ～

At Wood One, we find new value in unused and neglected forests, with the corporate philosophy of "working so that the community, forest owners, and nature all thrive together," practicing forestry that benefits people and nature involved.

We particularly emphasize the "Wood Connect Project." This project, in collaboration with Tanaka Sawmill, Minamata District Joinery Union, Kumamoto Prefecture Architects Association Minamata-Ashikita Branch Youth Division, and Minamata Environmental Academia, aims to give students studying architecture at Minamata High School real work experience and to inform them about the work and appeal of forestry.

Wood one is involved in this project by guiding logging experiences at the site and giving lectures at schools.



Wood one LLC Address: 250-1 Hatsuno, Minamata City ☎ 62-7205

### Keyword

### The Function of Forests

Currently, domestic forestry is losing demand to cheaper foreign timber, resulting in a vicious cycle where "a decrease in the shipment of Japanese wood leads to fewer people working in forestry, causing forests to be neglected due to labor shortages, and increasing the number of deteriorated forests." Neglected forests adversely affect the organisms living in them and weaken the inherent functions of forests such as storing rainwater and absorbing carbon dioxide.

To solve this situation, it is important to appropriately harvest timber from forests, conduct reforestation, and perform management activities such as thinning and underbrush clearing.



# Peace, Justice and Strong Institutions

Promote peaceful and inclusive societies for sustainable development, provide access to justice for all and build effective, accountable and inclusive institutions at all levels.

## Please Don't Hesitate to Reach Out for Advice Instead of Struggling Alone

～ Minamata City Yorisoi Support Center ～

Goal 16 of the SDGs aims for a just world where everyone can live in safety, with targets such as reducing violence and abuse, and ensuring equality under the law.

In Minamata City, we have established the "Yorisoi Support Center," a consultation service that supports women facing various difficulties such as domestic violence from spouses or partners, sexual violence or harassment, divorce issues, and financial hardships. The center offers companionship and helps find solutions together.

Consultations are free of charge and open to all regardless of age, disability, or nationality. Female support counselors handle consultations, and personal information is thoroughly protected. If you are troubled by issues you cannot discuss with family or friends, please reach out to us.

\* Within the Yorisoi Support Center, we also have the "Spousal Violence Consultation Support Center" and the "Sexual Violence Consultation Support Center."

Minamata City Yorisoi Support Center (Within the Minamata City Children and Parenting Division, Children's Family Center) ☎ 63-2738



### Keyword

## DV (Domestic Violence)

Violence received from someone in an intimate relationship, such as a spouse, parent, child, partner, or common-law partner, is referred to as DV (domestic violence).

In addition to physical abuse such as hitting and kicking, acts like not providing living expenses, not allowing free movement, and verbal abuse also constitute DV.

Various forms of violence are used to control the other person, inflicting deep mental and physical scars. Violence from a partner is legally defined as a crime.





# Partnerships for the Goals

Strengthen the means of implementation and revitalize the global partnership for sustainable development.

## Promote the SDGs with "All of Minamata"

Each of the SDG goals, such as "achieving peace," "ending hunger," and "mitigating global warming," are very significant objectives.

To achieve these seemingly grand goals, cooperation from people all around the world is essential. This page introduces organizations and companies collaborating to achieve the SDGs in Minamata.

### Minamata City Regional Revitalization SDGs Comprehensive Strategy Council

A council composed of representatives from industry, academia, government, and the private sector, aimed at promoting regional revitalization and SDGs comprehensively and integrally across the community by reflecting the opinions of external experts.

### Major Organizations and Companies that Have Signed Partnership Agreements to Achieve the SDGs

In Minamata City, partnership agreements have been signed with universities and companies to engage in various activities related to human resource development and community building.

#### ■ Universities

- **Keio University** (Implementation of the High School-University Collaborative Future Course and booth exhibitions at the SDGs Future City Festa, among others)
- **Nippon Sport Science University** (Instruction and lectures by university coaches and athletes, among others)
- **Prefectural University of Kumamoto** (Dispatch of lecturers to public lecture sessions for citizens, acceptance of student training, among others)
- **National Taipei University of Technology** (Academic exchanges, interactions with Minamata high school students)
- **Vietnam Japan University** (Conducting workshops with Minamata high school students, among others)

And so on

#### ■ Companies

- **UT Mobility Service** (Initiatives addressing regional transportation issues)
- **AMI Co., Ltd.** (Establishment of remote medical systems and promotion of ICT)
- **Mitsui Sumitomo Insurance Co., Ltd.** (Conducting seminars for local small and medium-sized enterprises)
- **Otsuka Pharmaceutical Co., Ltd.** (Initiatives related to community health promotion and sports development)
- **Japan Post** (Regional watch activities, among others)
- **Yamato Transport Co., Ltd.** (Regional watch activities, traffic safety classes for young children, among others)
- **Sagawa Express** (Regional watch activities, traffic safety classes for young children, among others)

And so on

# SDGs Initiatives by Minamata High School Students

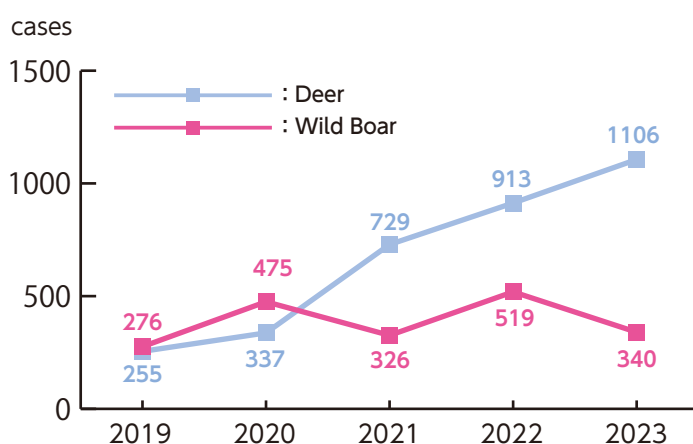
## Go! Inoshika Hunters!



It all started with a phone call.

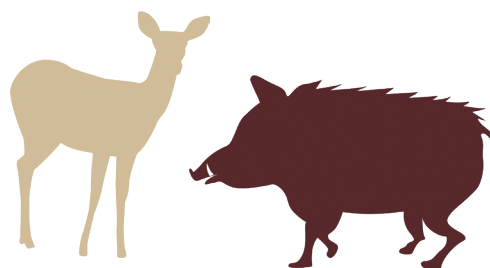
There was a request asking if the mechanical engineering department could help people suffering from damage caused by boars and deer, and the students of the mechanical engineering department first investigated the methods of damage control for wild animals. Damage control for wild animals is said to be supported by three main pillars: "capture," "preventing intrusion into farmland," and "management of wildlife habitats." These measures have been implemented in our city as well, but there were damages exceeding 25 million yen annually. Particularly in recent years, an increase in the population of wild animals able to survive the winter due to global warming has led to a rise in the number of harmful wildlife captures. Therefore, the students began a research project in 2019 under the theme "utilizing the knowledge and skills learned in the mechanical engineering department to create tools for capturing harmful wildlife." By using the tools they made themselves to experience hunting and verify the issues, they obtained trapping licenses and are working on improvements.

(Graph) Number of Captures of Harmful Wildlife in the City



\*Compiled by the City's Agriculture, Forestry, and Fisheries Department

From 2019 to 2023, the number of wild boar and deer captures increased by approximately **2.7 times**.



In the process of making the box traps, we learned about the mechanisms and setup from box trap manufacturers. Generally, box traps are highly durable and can be used repeatedly; however, they have disadvantages such as being heavy, making them difficult to move and set up, and being expensive. By carefully selecting the materials and having the students handcraft the traps themselves, we were able to create "durable and affordable" box traps.

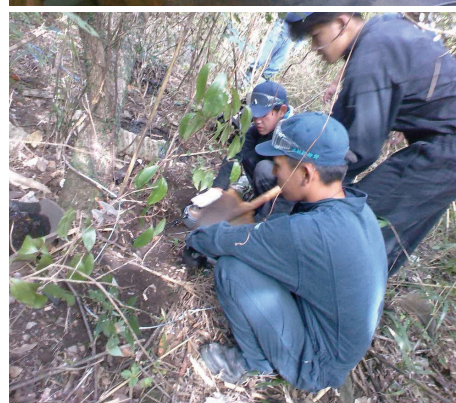
Although the students set up the box traps they made themselves and engaged in hunting, it often took several months to catch any game. While no game was being caught, it was necessary to replace the bait inside the box traps to prevent it from spoiling.

Therefore, starting from 2023, we began producing "leg snare traps," which do not require bait when set and are easier to move and install compared to box traps.

We learned from members of the hunting association how to make and set snare traps, as well as about safety measures. We also created tools like "electric stunners" and "nose snares" to use when capturing game.

After the traps were set, it was necessary to process the game as quickly as possible to avoid causing it to suffer. Therefore, local residents cooperated with patrols after the traps were installed, and within a few weeks of setting the snare traps, we were able to capture a wild boar.

Capturing with snare traps requires an understanding of the paths that the game takes. Therefore, we have set up sensor cameras in multiple locations within Minamata City to conduct ecological surveys of wildlife. By conducting these ecological surveys, we aim to increase the number of captured wild boars and deer.



### Through Our Efforts,

## A Beautiful Minamata for the Next Generation.

Since the initiative that began in 2019, we have made numerous box traps and leg snare traps, and have lent them to Minamata City and the hunting association. Looking back on our efforts, we realized that we have been able to conduct fulfilling activities by creating a community centered around Inoshika Hunters and strengthening our connections.

However, we realized that continuing this initiative within this community alone is insufficient due to a lack of manpower, and it does not fundamentally solve the problem.

Our future goal is to increase the number of collaborators through human connections and to work together to pass on a beautiful Minamata to the next generation.



\* The rental of box traps is only available through the city and the Minamata Hunters' Association. It is not available for rent or sale to the general public.



# SDGs Future City Minamata Original Logo Mark

In 2020, our city was selected as an SDGs Future City. To promote sustainable urban development based on the principles of the SDGs and to enhance the appeal and initiatives of our city as an SDGs Future City, we have created an original logo mark.

This logo mark features the "Himetatsu," a new species of seahorse discovered in the sea of Minamata, as its motif. The leaf on its head represents "nature," the droplets spilling from its dorsal fin symbolize "abundant water," and the heart-shaped tail represents the "Lover's Sanctuary" monument, showcasing various characteristics of Minamata. The colors used in the logo mark represent the 17 SDGs goal colors.



## MINAMATA SDGs



Original author of the logo mark  
Yuri Yamada (11 years old at the time)

# About Kumamoto Prefecture SDGs Registered Enterprises

## What is the Kumamoto Prefecture SDGs Registration System?

The "Kumamoto Prefecture SDGs Registration System" was established in January 2021 to support businesses and organizations that actively engage with the SDGs and to broaden the scope of SDGs initiatives within the prefecture by registering these entities.

This registration system enables local businesses and organizations to gain "awareness" of the relationship between the SDGs and their business activities, and to advance specific initiatives. Here we introduce the businesses within the city that have been registered so far.

As of September 2024

### List of Kumamoto Prefecture SDGs Registered Enterprises in Minamata City

No.	Business Name	No.	Business Name
1	RBS Co., Ltd.	18	Takayama Ltd.
2	Agri-Light Research Institute Co., Ltd.	19	Tokunan Construction Co., Ltd.
3	Asahi Printing Co., Ltd.	20	Toshihiro Co., Ltd.
4	Amicaterra Kumamoto Minamata Plant Co., Ltd.	21	Nakashima Construction Co., Ltd.
5	Iwai Construction Co., Ltd.	22	Nagata Wataru Tax Accountant Office, Nagata Wataru
6	MTL Co., Ltd.	23	Nagayoshi Gumi Co., Ltd.
7	Kukita Co., Ltd.	24	Napoleon Ltd.
8	KUROX Inc.	25	Biomass Resin Kumamoto Co., Ltd.
9	Konan Electric Co., Ltd.	26	Hirakida Construction Ltd.
10	Koken Co., Ltd.	27	MAC Consulting Co., Ltd.
11	Sakaguchi Gumi Co., Ltd.	28	Minasmile General Incorporated Association
12	Sakata Construction Co., Ltd.	29	Minamata Ashikita Forest Association
13	JNC Corporation Minamata Manufacturing Plant	30	Minamata City Social Welfare Corporation Disability Welfare Service Office Waku Work Minamata
14	JNC Engineering Co., Ltd. Kyushu Branch	31	Minamata Midori Welfare Association Green Forest Children's Garden, Social Welfare Corporation
15	General Co., Ltd.	32	Moo Moo Ltd.
16	Suzuki Construction Co., Ltd.	33	Yoshinaga Shokai Co., Ltd.
17	Consumer's Co-operative Kumamoto		

Kumamoto Prefecture Planning Division Strategy Promotion Team ☎ 096-333-2019

# Actions for SDGs Starting Today



Wondering "What can I do for SDGs?" There's a lot you can do as an individual! Here are some examples.



## 1 Things You Can Do at Home



### Let's Wash Our Hands and Gargle.

By washing your hands and gargling, you can prevent infectious diseases and protect yourself and those around you.



### Discussing Household Chores with Your Family.

A family is a team. Check to make sure no one in the family feels burdened.

### Reducing Food Waste.

Besides finishing all your meals, it's also important to cook only what you can eat and freeze any surplus ingredients to ensure nothing goes to waste.

### Checking the Hazard Map.

Check the disaster risks in your area and prepare for any emergencies.



## 2 Actions You Can Take While Shopping



### Choose "Front-Picked\*" Items for Immediate Consumption.

Most food waste from stores is due to expired products. By choosing items from the front for immediate consumption, you can help reduce store food waste.

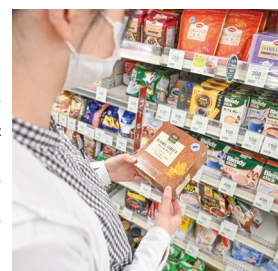
\* Select products with shorter best-before or expiration dates from the front of the display shelves.

### Buy Local Products from Local Stores.

This helps revitalize the local economy and reduces CO<sub>2</sub> emissions from transportation and travel.

### Pay Attention to Marks on Products.

Products that consider human and environmental impact often have marks indicating this. When choosing products, in addition to price and quantity, check if they are considerate of people and the environment.



## 3 Actions You Can Take at School or Work



### Save Paper.

Paper is made from wood. You can save paper by using the backside of used paper, printing on both sides, and consolidating multiple pages into one when printing.

### Respect Individuality and Personal Will.

It is important to respect individual personality and will, regardless of gender, nationality, or disabilities.



## The Vision for Minamata



# A Vibrant City Filled with Smiles and Happiness for Everyone - Minamata.

### ★ The Principles Valued by the SDGs

① Leave No One Behind.

② A Thriving Economy, Society, and Environment.

Our city is working on community development under the slogan "A vibrant city filled with smiles and happiness for everyone - Minamata". The phrase "happiness for everyone" in this slogan means "leave no one behind", while "a vibrant city filled with smiles" means "a thriving economy, society, and environment where residents are smiling", reflecting the principles of the SDGs.

While continuing our environmentally conscious efforts, our city is addressing sustainable community development in response to population decline and aging, under the four visions of "Earning Foreign Currency - Minamata", "A Chosen City - Minamata", "A City of Vitality - Minamata", and "Connecting to the World - Minamata".

However, achieving the large-scale goals of the SDGs is far beyond the reach of the city's efforts alone. By each individual finding and practicing what they can do, we can contribute to the achievement of the SDGs. Let's start with what we can do to leave a better Minamata for the next generation.





## **MINAMATA** **SDGs**

Revised in February 2025  
Minamata City Mayor Official Room  
Postcode: 867-8555  
Address: 1-1-1 Jinnai, Minamata City  
☎0966-61-1657