

Minamata Environmental Academia

水俣環境アカデミア



SDGs 未来都市

みなまた

The Minamata Environmental Academia Ideal

Minamata Environmental Academia was established in April 2016, as a center for research and higher education, with the goal of promoting the development of human resources, supporting the local community, and solving regional issues. It achieves this by working with local residents and businesses to partner with universities, research institutions, and businesses both near and far, and conducting research and educational activities based on the knowledge and lessons learned from Minamata, its development as an environmental model city, and its efforts to become an SDGs Future City.

Minamata Environmental Academia is engaged in a number of initiatives to promote education and research, community development, and job creation, based on the principles of Sustainable Development Goals (SDGs).

Regional Contribution

- Focusing on local residents, we develop capable people who are able to think for themselves and learn for themselves without being caught up in preconceived notions, through providing opportunities to encounter outside 'knowledge'.
- By connecting regional needs with outside knowledge such as from domestic and international students and researchers, and by promoting research activities, we suggest specific ideas and techniques in order to solve regional issues.
- Through various types of projects, we promote Minamata regional education and research activities, city development and job creation, as well as to contribute to the realization of a sustainable community.

Global Contribution

- We summarize the Minamata region's knowledge, wisdom and learned lessons learned and disseminate solutions for the realization of a sustainable community to the world.
- We actively accept people such as students and researchers that make the Minamata region their research field, and make proposals in order to connect research themes to Minamata regional issues.
- We actively attract educational activities in order to practically apply the Minamata region's resources (such as human resources and environmental, cultural and industrial resources) to developing capable people who will bear the next generation.

Minamata Environmental Academia is actively building networks to become a collaboration center for industry, academia, government, and citizens. We have signed partnership agreements and MOU (memorandums of understanding) with both domestic and international universities as well as research institutions, and we conduct and develop projects through collaboration with these organizations.

Various Networks

■ Partners with which various partnership agreements have been signed

【Domestic】

- Prefectural University of Kumamoto
- Kumamoto University
- Sojo University
- Keio University
- Toyo University
- National Institute for Minamata Disease
- Minamata High School

【Abroad】

- National Taipei University of Technology (Taiwan)
- Vietnam Japan University (Vietnam)

■ Institutions, universities, etc., excluding those listed on the left, that we have hosted for conferences, training, etc.

【Domestic】

- University of Nagasaki
- University of Tsukuba
- WASEDA University, etc.

【Abroad】

- United Nations Environment Programme (UNEP)
- Kasetsart University (Thailand)
- Singapore University of Social Sciences (Singapore), etc.

Minamata Environmental Academia Programs

Community Contribution Programs

Public Seminars



As part of our human resource development program, we partner with universities and research institutes to provide learning opportunities for citizens based on themes that are familiar and useful to their daily lives.

We offer courses on a variety of topics, such as the environment, health, dietary education, and agriculture, etc. These courses include not only lectures, but also workshops, so that participants can take a hands-on approach to the content.

SDGs Future City Festa



We host this event with the aim of promoting awareness and understanding of Sustainable Development Goals (SDGs).

Hosted in partnership with universities, the National Institute for Minamata Disease, Minamata High School, and local businesses and organizations, this event features hands-on booths offering experiments and international exchange, as well as exhibits to encourage people of all ages to engage with SDGs and promote Minamata as an SDGs Future City.

Research Support Programs

Through our research activities, we aim to not only disseminate the experiences and lessons learned from Minamata disease, but to produce human resources who can think, learn, and act under their own initiative, and who can contribute to sustainable community development in the future.

(1) Junior High/High School Student Research Experience Program



We provide opportunities to experience research activities for junior high and high school students, with the goal of developing their interest in research, and produce human resources who will engage in research activities under their own initiative.

Following a lecture about research activities and a science class, students set their own research themes and then present their results.

(2) Programming Workshops



In support of research activities in the information science field, we host programming mentor courses, led by experts.

Following these courses, high school students and citizens who received mentorship then conduct workshops to teach programming to elementary and junior high school students.

Minamata Environmental Academia Programs

Community Contribution Programs

Minamata High School Support Programs

Supporting Minamata's sole high school, Minamata High School, is one of the Minamata Environmental Academia's top priorities. Utilizing the network that the Academia has built, we provide learning opportunities in partnership with universities and local companies, contributing to the development of human resources who will lead our future sustainable society.

(1) High School-University Collaborative Future School



We support the development of our future generations by exposing them to various issues both domestic and abroad through discussions and workshops, enabling them to practice problem solving from a global perspective.

We conduct workshops in partnership with Keio University and Vietnam Japan University (Vietnam), respectively.

(2) Industry-Academia-Government Collaborative Program Mokuiku ("Wood Learning") Workshop



With local lumber as a focus, we forge connections between industry, academia, government, and the private sector to provide opportunities to learn about forest conservations and sustainable community development.

Following lectures from experts, and with help from the Minamata District Furniture and Fixture Association, high school students construct wooden furniture, which are then donated to public facilities, as well as elementary and junior high schools.

Symposiums



Symposiums are held with the aim of providing residents and government officials with a wide range of opportunities to encounter new "knowledge."

Our symposiums feature keynote addresses by prominent speakers and panel discussions by experts in a range of fields, providing residents with opportunities to learn about creating sustainable communities based on the principles of SDGs.

Training Programs



We actively accept trainees to promote our efforts as an environmental model city and SDGs Future City, utilizing the lessons learned from Minamata disease.

The Minamata Environmental Academia serves as the secretariat for the Minamata Training Program of the National Environmental Research and Training Institute, Ministry of the Environment. As a core institution for human resource development in relation to environmental conservation in Japan, the Minamata Environmental Academia is involved in the implementation of conservation-related training programs.

Minamata Environmental Academia Programs

International Contribution Programs

Sakura Science Plan Training in Minamata



With support from the Japan Science and Technology Agency (JST), we invite outstanding young people from overseas to Minamata City for a seven-day training program, where they learn about the lessons from Minamata disease as well as the current state of and issues faced by the region, and ways to consider the sustainability of local communities.

The training program features fieldwork involving environmentally friendly initiatives, and exchange programs with elementary and junior high schools, as well as Minamata High School.

Cooperation with National and UN Agencies



Since the adoption of the “Minamata Convention on Mercury”, we have implemented numerous programs in cooperation with the Ministry of the Environment and UN agencies.

To promote the Minamata Convention, we have cooperated in organizing workshops sponsored by the United Nations Environment Programme (UNEP), and the “MOYAI Initiative,” organized by the Ministry of the Environment and the United Nations Industrial Development Organization (UNIDO).

Research and Survey Activity Promotion Program



We are also active overseas to build and deepen the Academia’s international network, and to develop the infrastructure for human exchange and joint research.

We utilize the network that we have built in programs such as the Sakura Science Plan Training in Minamata, and international exchange programs at Minamata High School.

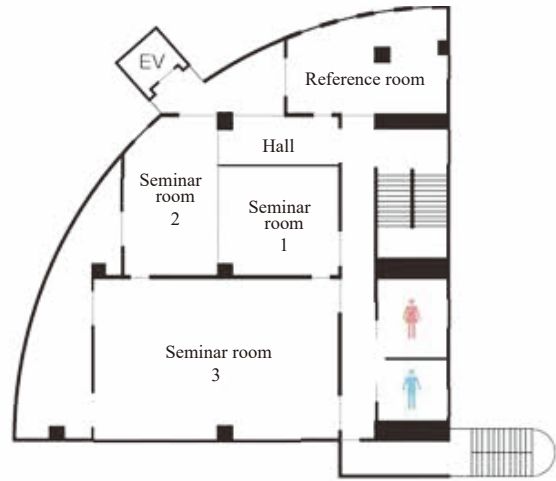
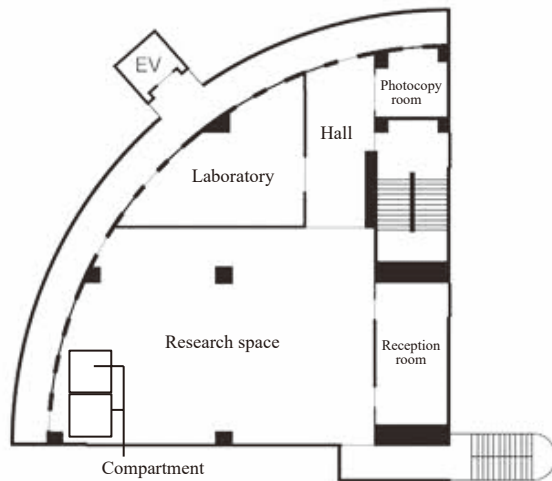
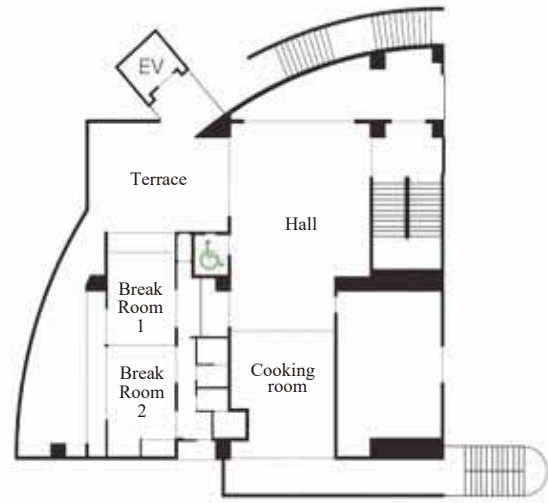
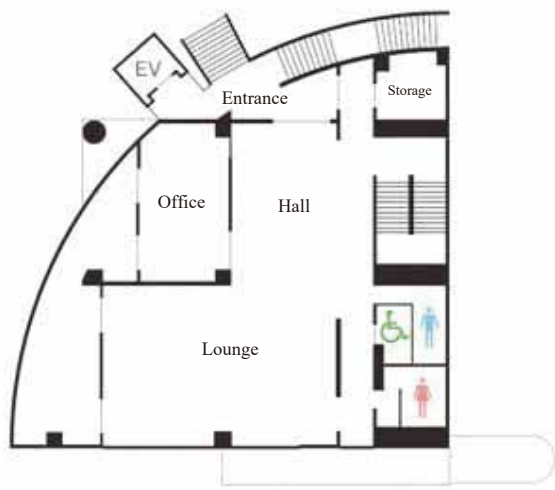
Training Programs



We actively accept trainees to promote our efforts as an environmental model city and SDGs Future City, utilizing the lessons learned from Minamata disease.

With the aim of producing human resources who can contribute to sustainable community development, we accept trainees from Keio University and international students from ASEAN countries, as well as interns from University of Tsukuba, who conduct fieldwork and exchanges with Minamata High School students.

Minamata Environmental Academia Facilities Overview



Minamata Environmental Academia Facilities Overview

Open Hours: 9AM~7PM
Closed Days: Saturday, Sunday, public holidays,
and the new year period (Dec 29 ~ Jan 3)

■ Facility Usage Fees

	Area	Size (m ²)	Usage fee (per hour)	Usage fee (per day)
1 st floor	Lounge	118	620 yen	-
	Hall	84	410 yen	-
2 nd floor	Hall	84	410 yen	-
	Cooking room	40	410 yen	-
	Break room 1	20	110 yen	-
	Break room 2	22	110 yen	-
3 rd floor	Research space	140 (around 36 seats)	620 yen	4,960 yen
	Research space (Compartment)	4	110 yen	880 yen
	Laboratory	55	260 yen	2,080 yen
4 th floor	Seminar room 1	42 (around 12 seats)	210 yen	1,680 yen
	Seminar room 2	45 (around 21 seats)	210 yen	1,680 yen
	Seminar room 3	123 (if using desks: around 54 seats. Seats only: around 100 seats)	620 yen	4,960 yen

■ Equipment Usage Fee

	Item	Usage fee (per use)
2 nd floor	Shower room	110 yen
3 rd floor	Draft chamber	1,020 yen
	Broadcasting equipment (one set)	510 yen
	Computer equipment (one set)	510 yen
	Projector (one set)	510 yen
	Television Monitor	510 yen

※ When using the shower room, please prepare your own items such as a towel and soap.

■ Heating and cooling fees

Item	Usage fee (per hour)
Heating and cooling	310 yen

Those who wish to use our facilities must apply and make a reservation in advance. After making a reservation over the phone, please submit the permission application form (submissions may be made by e-mail or fax). The application form and other forms can be downloaded from the website below.

■ Minamata City website

<https://www.city.minamata.lg.jp/kiji0031616/index.html>



Access

■ From Tokyo

Haneda Airport (around 2 hours by plane) → Fukuoka Airport (around 5 minutes by subway) → Hakata Station (around 70 minutes by Shinkansen) →

Shin-Minamata Station (around 5 minutes by taxi) → Minamata Environmental Academia

■ From Osaka

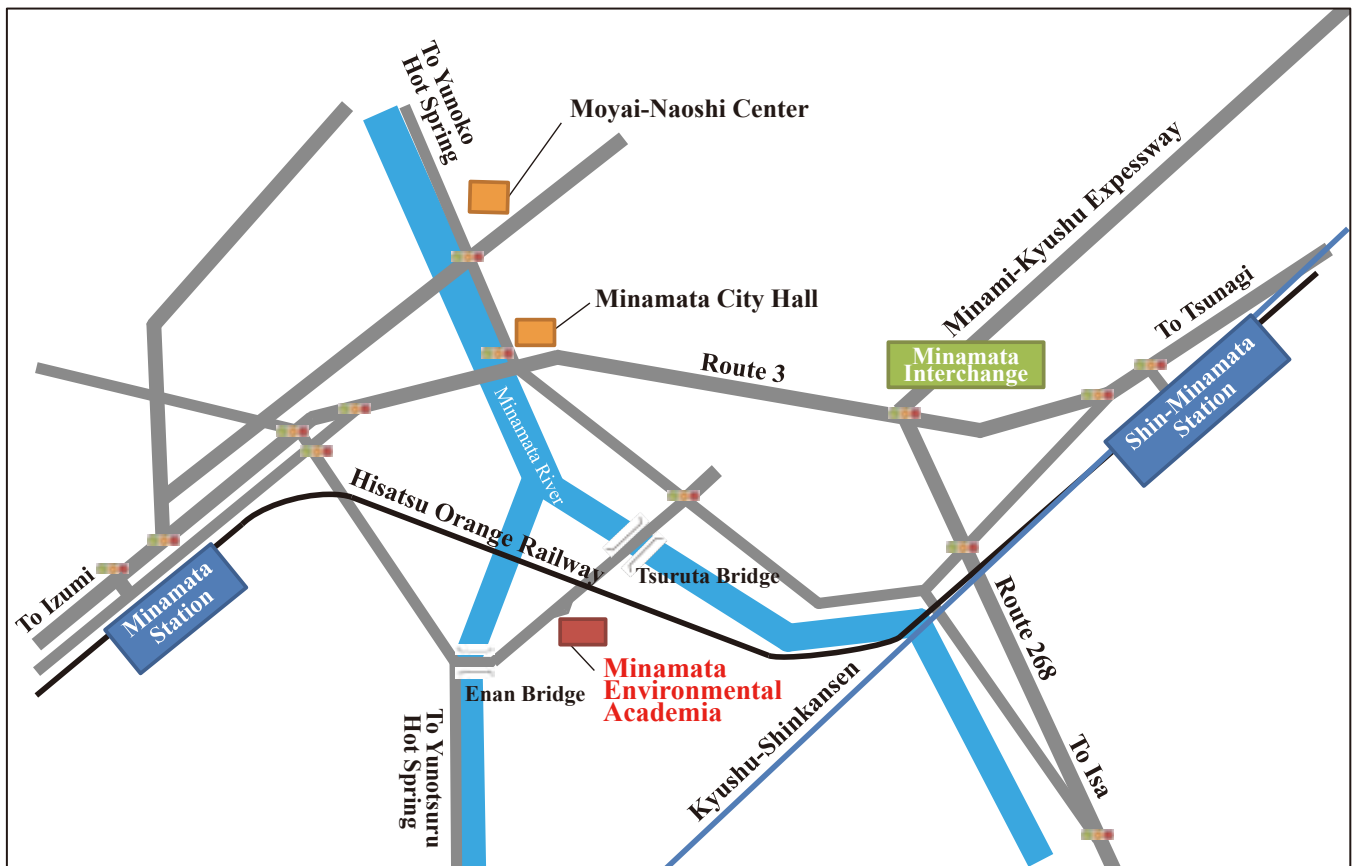
Shin-Osaka Station (around 3 hours and 50 minutes by Shinkansen) → Shin-Minamata Station (around 5 minutes by taxi) → Minamata Environmental Academia

■ By car

Around 5 minutes from the Minamata Interchange on the Minami-Kyushu Expressway (west circuit).



Map of surrounds



■ Contact

Minamata Environmental Academia

Community Support Division
Minamata City Government

6-1 Nanpukuji
Minamata-shi, Kumamoto-ken 867-0023
TEL: (+81) 966-84-9711
FAX: (+81) 966-84-9713
E-mail: academia@city.minamata.lg.jp

Published in February 2024

