



みなまた エコタウン

MINAMATA ECO-TOWN

Minamata Eco Town

What is the Eco-Town Project?

The Eco-Town Project is a system implemented by the Japanese Ministry of the Environment (MOE) and the Ministry of Economy, Trade, and Industry (METI) in 1997, to further advance the "Zero Emission (Waste Zero)" initiative.

Local governments create a plan so as to utilize the region's qualities and create a system where local residents and businesses cooperate to support an advanced, city-planning model that is in harmony with nature. Through the suppression of waste and encouragement of recycling, the goal of each plan is to create an independent, recycling-oriented society. Upon approval from MOE and METI projects based on the Eco-Town plan are able to receive support from the national government.

Utilizing this system, the "Minamata Eco-Town Plan" was drafted and approved in February 2001.

The Characteristics of the Minamata Eco-Town Plan

Although Minamata developed rapidly in the midst of the country's post-war economic growth, it experienced the unparalleled industrial pollution that led to Minamata Disease. As a result, not only the victims but the entire community collapsed, the economy deteriorated, and the citizens suffered for a long period of time.

In Minamata City, reflecting on the mistakes made when a society is structured with economic growth as the priority, we seek to establish a lifestyle where we do not pollute—where we do not put burden on the planet. Now, as "Japan's Top Eco-City: Minamata," we are expanding our programs while raising public awareness about the environment. The advanced trash separation brought about by the citizens is a great example.

Promoting a change of values so as to bring together the citizen's strenuous effort to protect the environment with industry and regional economic revitalization in this manner is the Minamata Eco-Town plan. The three concepts of the Minamata Eco-Town Plan of the plan are, "Become a model for all the small to mid-size cities in the nation," "Promotion of the Four Rs (Refuse, Reduce, Reuse, Recycle) throughout the trinity of Citizens, Government, and Industry," and "A suitable, citizen oriented system."

<Our Footsteps>

- 1992 Proclamation of "Creation of a Model Environmental City"
- 1993 Beginning of the 20-category recycling sorting system (Currently in 2012 there are 24 categories of recyclable material)
- 1999 Minamata City Office Receives ISO14001 Environmental Management Standard Recognition
- 2001 Eco-town Project approved by the national government
- 2008 Designation as a "Model Environmental City" by the national government
- 2011 Acquisition of the title "Japan's Top Eco-City"

Initiatives Regarding Minamata City's Environment

Proclamation of "Creation of a Model Environmental City" (1992)

Acquisition of the title "Japan's Top Eco-City" (2011)

ISO Environmental Standards, Environmental "Meister" System

"Eco-shop" System



Environment

**Example of synergetic effects

High-degree of trash separation

= Environment x Citizen Cooperation



Minamata Eco-Town Project

Maximize the synergy between the three pillars

Economy

Enrichment of Civic Life



"Sweets Town" Development



Citizen Cooperation, Reuniting the Community



Minamata Eco-Town Initiatives

●Minamata Eco-Town Council: The Minamata Eco-Town Council was inaugurated in October 2002 to provide a place for the businesses put in place by the Eco-Town plan to share information, with the goal being to strengthen mutual cooperation. Through the joint ownership of information, the council aims to create a new environmental business model born of joint industrial, governmental, and academic institutional cooperation wherein universities and the like may put skill and knowledge to practical use.

■Minamata Industrial Complex Festival

The festival was started in 2009 so that the citizens of Minamata can learn about the businesses and factories centered around in the industrial complex. With events like a recycled bike sale and tours of each business's factory, the festival draws 700-800 visitors every year. In 2011, around 800 people participated.



■Model Environmental City Exhibitions

At these exhibitions, we introduce the Minamata Eco-Town plan to others with the goal of inviting new enterprises to Minamata. While answering the questions of the visitors, we try to show the appeal of the city's initiatives to protect the environment and of Minamata's Eco-town plan.



■Minamata Eco-Town Council Award・Presentation Ceremony (hosted by the Eco-Town Council)

Started in 2007, this is a project started to award organizations where environmentally-friendly initiatives are being enforced. In 2011, a local kindergarten was awarded for an initiative bringing students, parents, and teachers together to collect milk cartons.



■Exchange with Other Eco-Towns

We encourage exchange with other eco-towns in the Kyushu region, undertaking exchange projects that lead to the proposal of new business ventures, the construction of networks between businesses and their respective regions, the resolution of problems addressing each Eco-Town, and so on.



Exchange with the Kita-Kyushu Eco-Town

General Recycling Center

(Lifestyle Support Workshop)

The generic name for the Minamata Industrial Complex located on 20 hectares of former factory land is the "General Recycling Center," but as it provides a place for the new businesses that will support our lives, it has been given the secondary name of "Lifestyle Support Workshop." With this area as a base location, environment-related industries and environmental improvement of existing industries will be encouraged in conformity with the Eco-Town project.



Supporting Institution

★ Minamata Environmental Techno-Center (Inc.)

To fulfill the city's plans of becoming a model environmental city, this center supports growth and technological development of existing companies in the recycle center and promotes the creation of new enterprises. Presently, the offices of the Minamata Eco-Town Council are located here.



Supporting Institution

★ Minamata City Business Support Center

Located in the Minamata Environmental Techno-Center, this institution provides support for local businesses so that they may improve the management of their business and develop new technologies. The Business Support Center also helps with the creation of new enterprises. The support staff offer business consulting, office visits, research, and advertising services to vitalize the local businesses of Minamata.



①Home Appliance Recycling Facility Act-B Recycling (Co. Ltd)

■Tours/Inquiries 867-007 Kumamoto-ken Minamata-shi
Shiohama-machi 278-6
TEL: 0966-62-3300 FAX:0966-62-3338
URL: <http://www.act-b.co.jp>

■Business Summary

【Primary Business】

- Processing of household electronics into recycled products
- Recycling of PC and office appliances
- Recycling of medical appliances



■Introduction

Founded in December, 1999 and starting operations in 2001, our company imports designated home appliance recycling products, such as televisions, refrigerators, washing machines, and air conditioning units, from six prefectures in Kyushu, with the exception of some areas of northern Kyushu. We play a role in the city's recycling-oriented society by working to make limited resources useable for longer.

■Product Information



②Complete Circulation Model Food Recycling Facility Environmental General Technology Center (Co. Ltd)

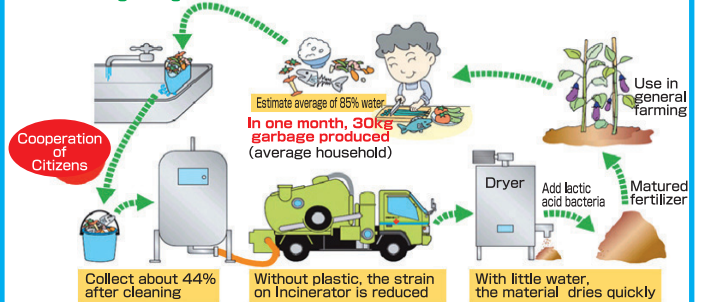
■Tours/Inquiries 867-0066 Kumamoto-ken Minamata-shi
Koga-machi 2-12-7
TEL: 0966-63-0110 FAX:0966-62-0119
URL: <http://www.ksgc.ne.jp>

■Business Summary

We collect food waste from households, eating establishments, and businesses and manufacture organic fertilizers through the utilization of lactic acid bacteria.



Actual data on the reduction of garbage from 30kg to 8kg



How 30kg of waste is reduced to 8kg

In the case of 30 kg of waste composed of 85% water After drying

● Moisture in waste matter	25.5 kg	→	3.5 kg	} 3.5 kg ÷ 8 kg = 44% reduction
● Dry waste matter	4.5 kg	→	4.5 kg	

③Used Oil Recycling Facility Kiraku Kogyo (Co. Ltd)

■Tours/Inquiries 867-0067 Kumamoto-ken Minamata-shi
Hamamatsu-machi 5-39
TEL:0966-62-6200 FAX:0966-62-7300

■Business Summary

We manufacture recycled heavy oil by collecting and filtering the oils discharged from car repair shops, gasoline stations, and the like.



■Detoxification of Oil Waste

Using refined, modern techniques, we detoxify oil using incineration equipment.



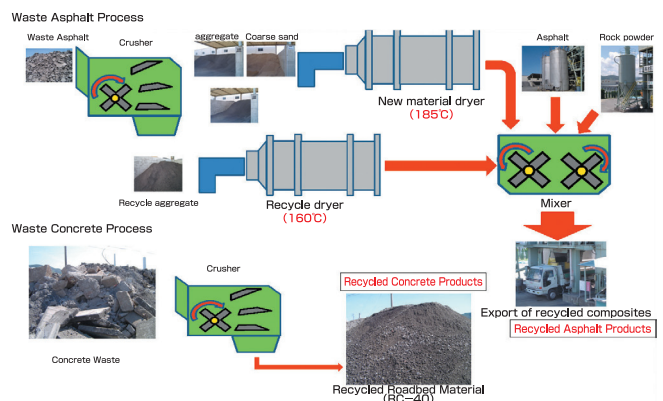
At our company, we use disposal techniques based on the "Disposal and Cleaning of Waste Laws" (Haikihou) that ensure a complete, pollution free disposal system, from "reception" to "incineration." Also, we are confident in our safety and anti-pollution equipment.

④Construction Material and Asphalt Composite Material Manufacturing Facility Minamata Asukon (Co Ltd.)

■Tours/Inquiries 867-0068 Kumamoto-ken Minamata-shi
Hamamatsu-machi 5-60
TEL: 0966-68-2250 FAX:0966-62-1183

■Business Summary

We collect and recycle asphalt clumps and construction waste material into recycled composites and roadbed material. We also do lumber and asphalt construction work.



Asphalt waste material is crushed small (<13 mm). The crushed aggregate and new material are heated separately, weighed, and then added to the mixer simultaneously with rock powder and jettisoned to become new asphalt. Concrete waste is crushed (<40 mm) and made into new roadbed material.

⑤Fertilizer Manufacturing Facility Using Septic Material RBS (Co. Ltd)

■Tours/Inquiries 867-0035 Kumamoto-ken Minamata-shi
Tsukinoura Azamaeda 54-190
TEL:0966-68-2130 FAX:0966-68-2133
URL: <http://www.jnc-ec.co.jp/>

■Business Summary

General Waste Disposal (water purification and human waste), production and sale of organic fertilizer (RBS Gold), Natural purification facility maintenance



■Message

Our company has the first water purification and human waste processing plant in Japan created via a private finance initiative. Using organic soil bacterium, the decomposing material is further decomposed and dried to become organic fertilizer. This fertilizer is sold to neighborhood farms, and is receiving praise for its quality.

■Product Information



⑥Used Plastic Bottle Recycling Facility

Welfare Service Business: **Waku Work Minamata**

■Tours/Inquiries 867-0068 Kumamoto-ken Minamata-shi
Hamamatsu-machi 5-95
TEL:0966-63-3598 FAX:0966-63-3604
URL: <http://www.minamata-sj.or.jp/>

■Business Summary

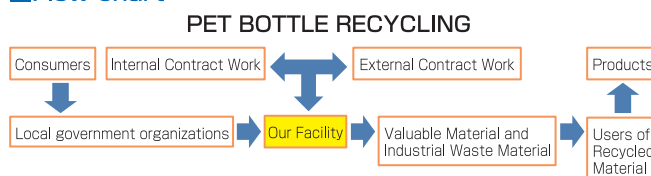
A business that is a union of environmental and welfare services.



■Message

Focusing primarily on the recycling of plastic "PET" (Polyethylene terephthalate) bottles, our activities take place both inside and outside our factory facilities. Based on the Law of Support for the Self-Reliance of the Disabled, we encourage development of the physical and mental skills necessary for starting a job through drills and training.

■Flow chart



⑦Glass bottle reuse/recycle facility Tanaka Shouten (Co Ltd.) Ecobo Minamata

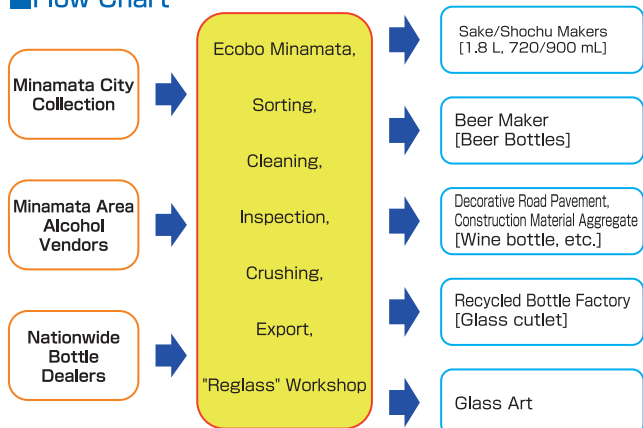
■Tours/Inquiries 867-0068 Kumamoto-ken Minamata-shi
Hamamatsu-machi 5-8
TEL:0966-69-2711 FAX:0966-69-2712

■Business Summary

We collect, wash, and inspect disposed glass bottles, returning reusable glass bottles to dealers and processing unusable glass bottles into other material.



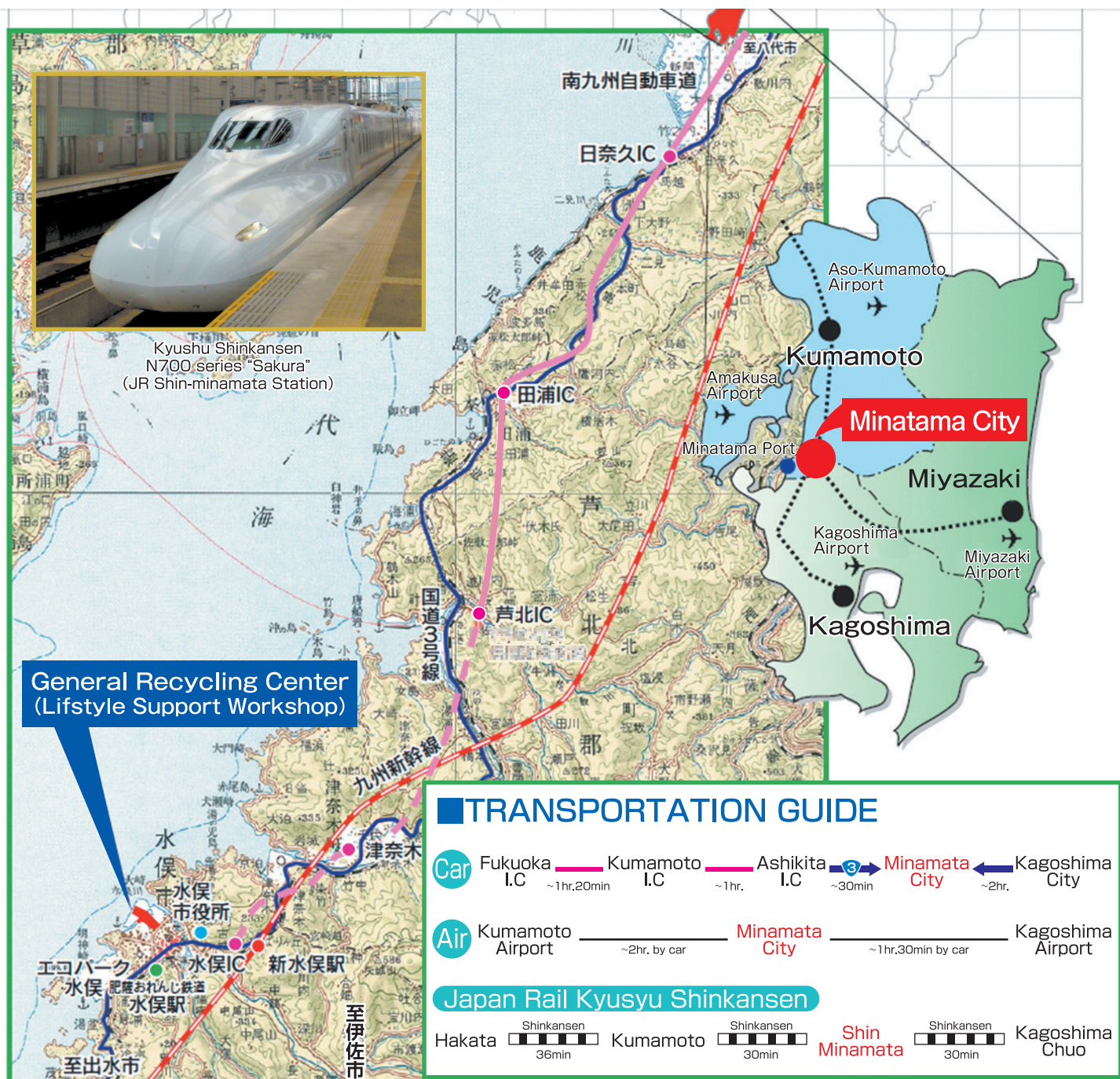
■Flow Chart



**みなまた
エコタウン**
MINAMATA ECO-TOWN

This mark represents the ever widening winds of ecological change, using the first letter of the keyword of Minamata Eco-Town, "ecology," as the motif. It gives the image of the people and the businesses of Minamata Eco-Town being drawn together, spreading out to other areas, and getting bigger and bigger.

ACCESS



- Eco-Town Tours/Inquiries:
General Incorporated Association Shiranui Planning
Minamata City Office 867-0051 Kumamoto-ken Minamata-shi Showa-machi 2-4-8-1F

TEL:0966-68-9450 FAX:0966-63-5909

URL:<http://www.mkplan.org/>

- For all other Inquiries:
Minamata City Industry and Construction Department
General Economic Affairs Management Division
867-8555 Kumamoto-ken Minamata-shi Jinnai 1-1-1

TEL:0966-61-1628 FAX:0966-63-5547

E-MAIL keizai@city.minamata.lg.jp